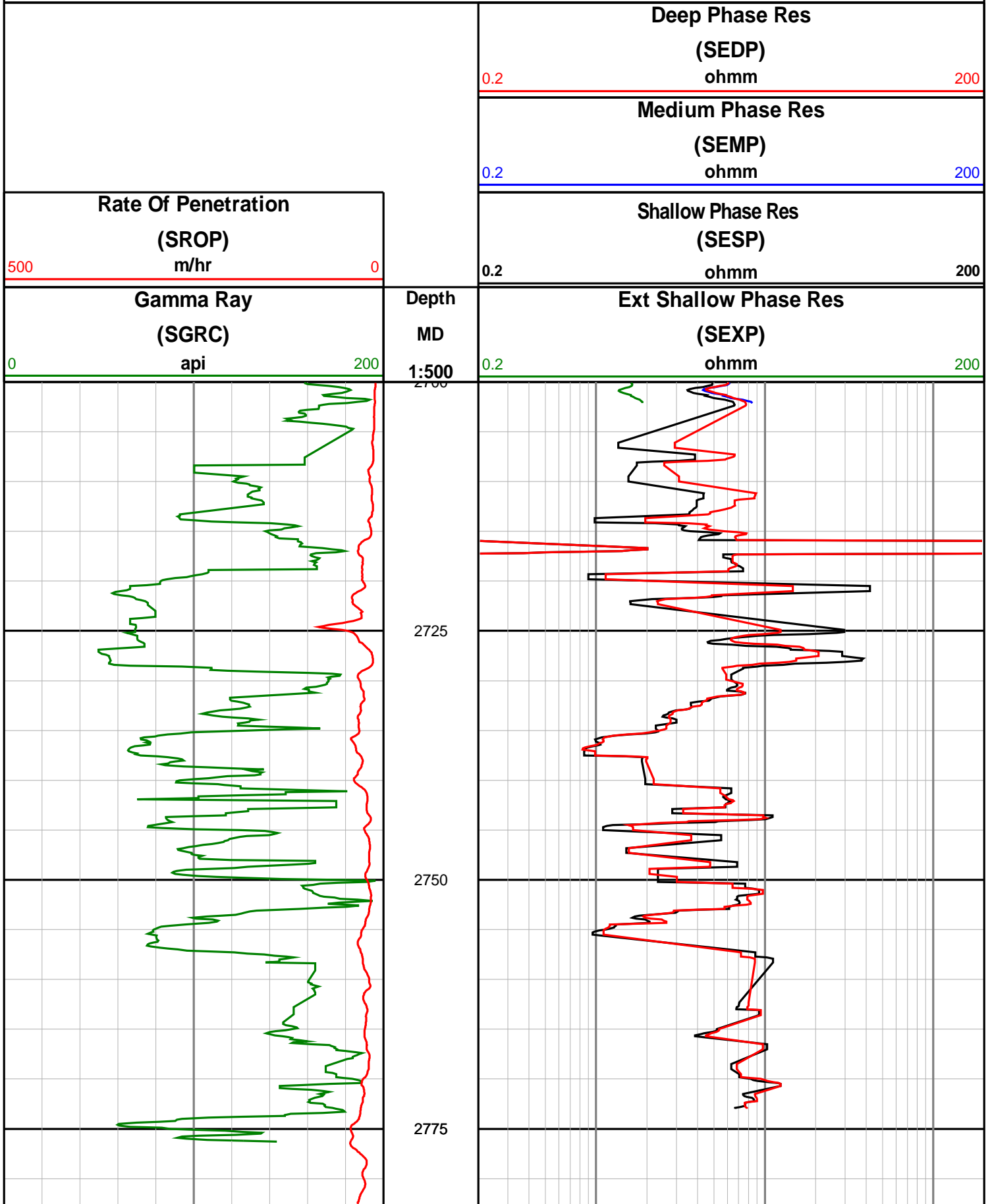
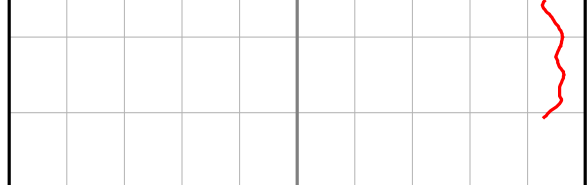



# Anzon Australia Ltd

## Manta-2A

### LWD Log (Permanent Datum - LAT)



		
<p style="text-align: center;"><b>Gamma Ray (SGRC)</b></p> <p style="text-align: center;">api</p> <p>0 <span style="float: right;">200</span></p>	<p style="text-align: center;">Depth MD 1:500</p>	<p style="text-align: center;"><b>Ext Shallow Phase Res (SEXP)</b></p> <p style="text-align: center;">ohmm</p> <p>0.2 <span style="float: right;">200</span></p>
<p style="text-align: center;"><b>Rate Of Penetration (SROP)</b></p> <p style="text-align: center;">m/hr</p> <p>500 <span style="float: right;">0</span></p>		<p style="text-align: center;"><b>Shallow Phase Res (SESP)</b></p> <p style="text-align: center;">ohmm</p> <p>0.2 <span style="float: right;">200</span></p>
		<p style="text-align: center;"><b>Medium Phase Res (SEMP)</b></p> <p style="text-align: center;">ohmm</p> <p>0.2 <span style="float: right;">200</span></p>
		<p style="text-align: center;"><b>Deep Phase Res (SEDP)</b></p> <p style="text-align: center;">ohmm</p> <p>0.2 <span style="float: right;">200</span></p>